

June 2006



The Board of Trustees

Cathy Magill - Chair
Robert Taylor - Vice Chair
Hughie Bollan - Secretary &
Treasurer

The Board of Trustees

Dave Abbot, Dennis Aston
Sylvia Hilborne, Richard Lees,
Joe Magill, Helen Rooke,
Shean Saunders, Caro Ness,
John Watson

It has been sometime since we have been in contact, this has been due to the team being incredibly busy with the office move and the set up of new projects and services, including the Wiltshire Direct Payment Support Service - WDPSS and the Forum for Equality and Diversity In Somerset -FEDS (see page 2).

The past few months have been very exciting, if a little stressful at times. However we are now fully settled in to the new offices, our

accessible meeting room is open for business (see page 4) and people are settling in to their new roles well.

SAIN has grown considerably in the past 6 months, with three new people joining the office team and Pavla moving up to a full time position (see below)

We have continued to work on existing project such as the Sensory Loss Consultation and the Sedgemoor Disability Forum

(see page 3) and have just started looking for people who are interested in being consulted about the Somerset County Museum (see page 2).

We hope that you find this issue of the "Networker" of interest. Please feel free to contact Michelle in the SAIN office if you have any news you would like to share in future issues.

Regards *Richard*



Richard

Richard Pitman Chief Executive Officer

Richard has been with SAIN since its conception, originally as a Trustee, before most recently taking up his post as CEO in January. It is Richard's responsibility to drive the development of SAIN and it's services forward.



Michelle

Michelle Edwards Office Manager

Michelle is responsible for the day to day management of the office team and the development of office system. She is also responsible for the bookings for the SAIN meeting Room (See page 4)



Alison

Alison Mawhood Development Worker

Alison has spent considerable time implementing the WDPSS and is responsible for the continued development of the service. Alison is also overseeing the development of the FEDS project (See page 2)

Mandy Seaman Project Assistant

Mandy organises consultation projects. She is responsible for the promotion of projects, recruitment of participants, setting up of accessible meetings, liaising with the authorities who have requested the consultation and providing feedback to all those involved.



Mandy

Pam Powell Finance Support Worker

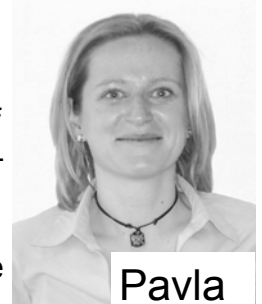
Pam makes sure the books balance and is the first point of call for any invoicing or payment queries. Pam also provides payroll support for the WDPSS.



Pam

Pavla Poksteflova Office Support Worker

Pavla is most peoples' first point of contact with the office and she provides administrative support to all departments. Pavla is responsible for the allocation of referrals for the WDPSS.



Pavla

Forum for Equality and Diversity In Somerset (FEDS)

FEDS was formed following equalities conferences in 2003, during which the need for an umbrella equalities organisation in Somerset was identified. Membership has been drawn from the six equalities strands of age, disability, faith, gender, race and sexual orientation. A committee has been formed to include voluntary sector representatives from each of these strands, together with officers from the statutory sector.

SAIN has two roles in connection with the forum.

Firstly we have recently been

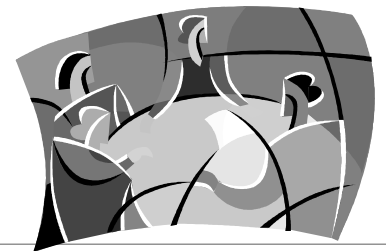
awarded funding by Somerset County Council to facilitate its development, including the development of a membership criteria and, once established, the promotion and development of a membership database. Our new Development Worker, Alison Mawhood, will be undertaking this work.

Secondly, we are the committee representatives for the disability strand. As such we will be representing the views of disabled people and disabled peoples' organisations.

Please feed any equalities issues you think need discussion or action through to Alison and keep your eye on our newsletter

for future updates on the project. You will see that our website now has a link to the FEDS site. This is currently under construction and we hope to have it up and running in the next few months. Other plans include a members meeting at the end of the summer and a large equalities celebration event in Spring 2007.

For more information, please contact Alison on 0844 9842828 or email alison@sain.org.uk



Somerset County Council Museum Of Somerset Consultation

Somerset County Council are working on a project to restore Taunton Castle and rejuvenate the County Museum. They are applying to the Heritage Lottery fund and are keen to explore the ideas of disabled people about what they would like to see in

the new museum and what would encourage them to visit. They would also like to learn about what physical and intellectual barriers exist that the museum designers should be aware of in any future development.

We would like to invite disabled people from the local area to attend a consultation event on

Wednesday 12th July 2006 at 9.45am at the SAIN offices in Taunton. SCC have provided funding for transport to the event, which we can arrange on your behalf.

If you would like more information or would like to reserve a place at the event please call Mandy on 0844 9842828 or email mandy@sain.org.uk

FIRST STEPS Programme Only 6 months left to take advantage of free one-to-one mentoring!

Over the past year and a half, the **First Steps** programme has helped people with health issues and disabilities to access training, volunteer opportunities, improved confidence and employment options. We can still help you!

WTCS can help:

- * to identify your skills
- * to find local training opportunities
- * with CV building and job searching
- * with finding out about other programmes to help you progress

Our personally designed programmes may help you take the first step forward towards a better future.

Our personal mentors cover the whole of Somerset and can visit

you at a time and place of your convenience.

If you've been injured or have a health condition and are claiming Incapacity or other Disability Benefits and would like help to move forward, give WTCS a call on freephone 0800 028 3037.



Please remember to let us know if you change address, telephone number or email so that we can stay in touch.

BSL Accessible leaflets and website.

We are keen to improve access to our information and are investigating the possibilities of producing our leaflets and updating our website with BSL video clips.

We are looking for a volunteer or volunteers who are competent in BSL and would be keen to work with us and become involved in the filming process.

We would be able to cover expenses and travel cost and hope

that this would be a positive, fun and worthwhile experience for the person concerned.

If you would like to be involved, please contact Alison at the SAIN office (alison@sain.org.uk)

Tunnel Vision

Tunnel Vision or, to give it its posh name, Retinitis Pigmentosa (RP) is a progressive eye malfunction leading to partial or complete loss of sight. It is a genetic defect with variations of speed in development and pat-

terns of inheritance.

People with RP have the same access difficulties as people with other visual impairments, although special difficulty arises with poor night vision and obstructed pavements. Town centres littered with pointless bol-

lards are a particular bane.

If you or a family member or friend have this condition why not get in touch with the local branch of the British RP Society. Contact Dorothy Killick on 01823 283237 or visit www.brps.org.uk

Sedgemoor Disability Forum

Exciting Opportunity for disabled people in Sedgemoor to express their views and concerns about their Local community.

SAIN will be facilitating the next meeting of the Sedgemoor Disability Forum on behalf of Sedgemoor District Council during June. The next meeting will take place on **Tuesday 20th**

June at 10.30am at The Princess Hall in Burnham-on-Sea. Morning refreshments and lunch will be provided.

The last meeting took place in Nov 2005 and was well attended. This is an excellent opportunity for disabled people in Sedgemoor to work with their local council to improve and develop their local community and put disability on the agenda.

At the meeting on the 20th June

we will be discussing access to information as well as other general issues you may wish to raise

If you are disabled and living in or using the services provided by Sedgemoor District Council we would be really pleased to welcome you at the meeting. For more information please contact Mandy on 0844 984 2828



Please keep me informed about future dates for the Sedgemoor projects

I am interested in (Please tick as appropriate):

The Sedgemoor Disabled Tenants Focus group

(To be involved in this group you must be a tenant of Sedgemoor District Council)

The Sedgemoor Disability Forum

(The Forum is open to any disabled person living in or regularly using the services of Sedgemoor District council)

Both the Disabled Tenants Group and the Disability Forum

Name

Address

..... Post code

Please cut out and return to FREEPOST-RRAA-RLEX-XXRU, Unit 11-12 Belvedere Trading Estate, Taunton, TA1 1BH

The SAIN Meeting Room

Accessible

Ground floor level Access,
Accessible Toilet, Loop
System,
Parking can be reserved for
Blue Badge holders

Located in the centre of Taunton, our meeting room can accommodate a range of styles to suit your meeting or event. Available for hire Monday to Friday and serviced by our friendly and helpful team.

For bookings or to discuss your requirements in greater detail, please contact us on 0844 9842828

Flexible

Meetings, Training
events, Displays
Conferences, Com-
munity Groups.....

Our meeting room
can accommodate up
to 40 people Theatre
style, 25 people
Boardroom style, 20
people U shape or
can be adapted to a
style to suit your
event



Ethical

SAIN is committed to the use of
Fair Trade and environmentally
friendly products where possible.



Economical

Room Hire - £10 per hour.
Tea/coffee - 80p per serving
Tea/Coffee/Biscuits - £1 per serving
Projector and screen - £5 per session

Other catering and equipment charges
are available on request

Catering

Flexible and interesting re-
freshment and catering op-
tions are available.

*"What could be better than a
hot bacon roll to get a break-
fast meeting going or a deli-
ciously indulgent Somerset
Cream tea for your afternoon
break!"*

Equipment

The following equip-
ment is available for
hire

Flip Charts, Projector,
OHP, Screen and Dis-
play panels

Charges available on
request

Other equipment can
be ordered in advance



Parking

Limited accessible parking is located
directly outside and can be reserved in
advance of your meeting. Other park-
ing is located within easy walking dis-

Fundraising Training

"A range of fundraising courses
are to be held in Taunton be-
tween June and December this
year. Subjects covered include:
Introduction to Fundraising,

Writing for Fundraisers, Busi-
ness Planning, Legacy Fund-
raising, Developing a Success-
ful Strategy for a Sustainable
Future and Getting more out of
Trust and Grant Fundraising.

Further details and booking
forms are available from: Lindy
Booth at Mind in Taunton &
West Somerset,
lindy@mindtwos.org.uk
01823 334906."

Please remember to let us know if you change address, telephone number or email so that we can stay in touch.

This publication is available in other formats including Large Print, Tape and Braille. Please let us know if you would like to receive it in another format.